

GEEK Twins



Geek Family

GK75-R08QS

GK75-R08QT

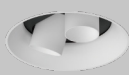
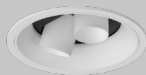
min. 1.5mm

max. 24mm

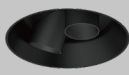
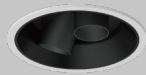
With Trim

Trimless

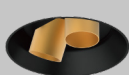
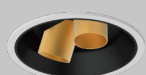
White



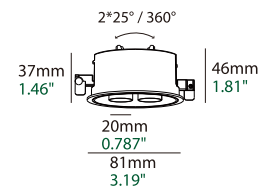
Black



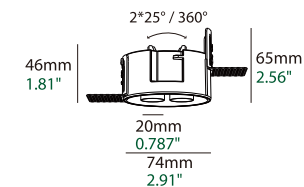
Golden



GK75-R08QS



GK75-R08QT



Basic Information

Model	GK75-R08QS/R08QT
Embedded Parts	With Trim/Trimless
Mounting	Recessed
Trim Finishing Color	White/Black
Reflector Color	White/Black/Golden
Material	Pure Alu. (Heat Sink)/Die-casting Alu.
Cutout Size	75mm
Light Direction	2*25° 360°
IP Rating	IP20
Power	Max. 8W
Input Voltage	DC36V
Input Current	Max. 180mA

Optical Parameters

Light Source	LED COB
Lumens	40lm/W
CRI	90Ra
CCT	3000K 3500K 4000K
Beam Angle	15° 25°
LED Lifespan	50000hrs

Driver Voltage	AC100-120V AC220-240V
Driver Options	ON/OFF DIM TRIAC/ PHASE-CUT DIM 0/1-10V DIM DALI